



GRIMWADE CRUSADE

August 29-30, 2020

Grimwade Airstrip, Grimwade WA

The event will be held at the Grimwade Airstrip and is being run on 29 and 30 August 2020 as an evening/morning race. The first driver's meeting is at 3 pm on Saturday 29 August 2020.

The race site is approximately a 2.5 hour drive South of Perth along the South Western highway, east of the town of Kirup. As with all race sites, we won't know exactly what to expect until we get there, but the tracks are superb, and for all the open classes, there are hills.

Start/Finish lines will be close to the campsite with no requirement to drive to them.

Safety Officer and First Aid

In the event of an emergency, the loud hailer will be used to signal and will continue to sound off. Everyone should meet at club HQ without your dogs and briefed on the emergency. In the event of loose dogs do not leave camp if you have not been briefed.

Only those with UHF Radios will be deployed and channel 21 to be used.

Food/Drink

BYO or bring cash to purchase from the food van:

Le Chariot de Café is onsite for Saturday – Lunch and Dinner; Sunday – Breakfast

Medical Issues

If your dog needs urgent medical attention, the nearest veterinary clinic is located at:

<i>Animal Care</i>	<i>Human Emergency Department Facilities (selected)</i>		
GEOVet Veterinary Hospital Hospital 89 Bussell Hwy West Busselton WA 6280 (08) 9754 4422	Bridgetown Hospital – 31 minutes from Grimwade 08 9782 1222 28 Peninsula Road, Bridgetown 6255 WA	Collie Hospital – 45 minutes towards(ish) Perth 08 9735 1333 Cnr Steere and Deakin Street, Collie 6225 WA	South West Health Campus – 56 minutes Bunbury Hospital 08 9722 1000 Cnr Bussell Highway and Robertson Drive, Bunbury 6230 WA

Venue

Grimwade Airstrip, Grimwade WA. The race site is approximately a 2.5 hour drive South of Perth along the South Western highway, east of the town of Kirup. We will have WASSA markers out as you get towards the race site.

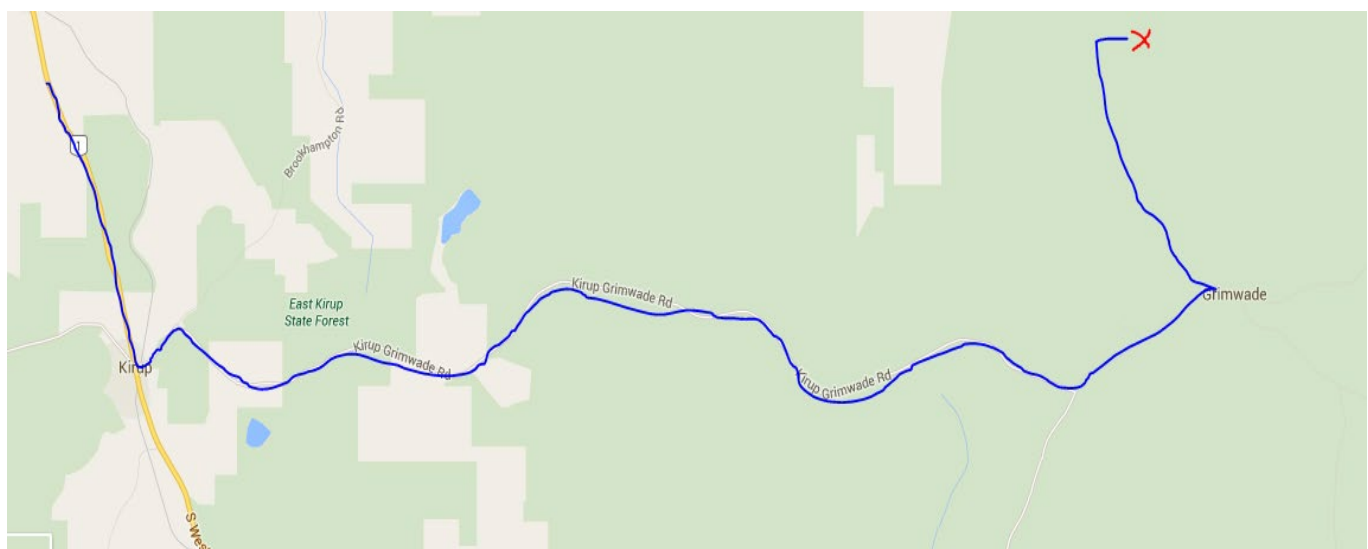
We will be camping on the Airstrip. Parking and camping are all located in the same area. There is no driving required from the camping area to the race start/finish chutes.

We will have a WASSA signpost/s on the road. Event HQ will be located at that entrance and people can park to the left or right on the Airstrip.

Directions to the race site

Directions below are from Kirup

- Head to Kirup on the South West Highway via Bunbury and Donnybrook.
- In Kirup, turn LEFT onto Brookhampton Road then in a few hundred meters turn RIGHT onto Kirup-Grimwade Road.
- In about 14km you reach the end of this road, turn LEFT onto Grimwade road.
- The entry to the camping area is on the LEFT about 2.5km along [the Greenbushes-Grimwade Road goes out to the right but you want to turn LEFT onto the little track]. It's not signposted but look out for the yellow sled dog signs.
- Once on the gravel, continue 300m then turn RIGHT at the T junction.
- In 300m follow the RIGHT fork – the bitumen one!
- Continue along this road for 3.7km then turn RIGHT at the T junction.
- In 300m turn LEFT onto the airstrip. You have reached your destination.
- Please do not camp along the SOUTH WEST side of the airstrip [left] as this is part of the race track. Camping area is shown in BLUE on the map below
- Drivers be advised that there are a few kms of moderate quality dirt road to get to site.



Camping Grounds in the Grimwade Airstrip marked in blue.



Accommodation/Amenities

Camp is open from midday Friday 28 August, 2020.

You can camp to the left or the right of the airstrip

Event HQ is a bush campsite with no facilities, but plenty of room for tents, campers, RV's and caravans. **Please be considerate and leave camping spaces near the start line for the entrants with larger/multiple teams.**

We will have a small number of portaloos on site, but if you can bring your own, please do.

It is an open space (airstrip) with limited shade unless you camp in the trees.

The campsite will be close to the race start/finish chute, so you will not be required to drive between the camp and start line.

There is no water on site, so plan on bringing enough to be self-sufficient for the duration of the event.

The nearest store is in the town of Kirup.

There will be no rubbish disposal facilities on site, so all trash must be taken out with you.

Campfires are permitted only if contained within a portable campfire pit/ring. No ground fires are allowed.

Dogs are not permitted to be free running or unrestrained at any time. Please ensure your dog(s) are on lead, tie-out line, crated or in the car/trailer when not racing.

When staking out your dogs around the campsite please take into consideration the proximity of any other dogs & campers, clean up after your dog, and fill in any holes if your dog digs. Please also remove any straw and dog fur from around your campsite before you leave.

*****PLEASE NOTE*****

It is a condition of our site permit from DPaW that we do not bring soil or plant material onto site, to prevent dieback issues. 'Bleached, clean straw with no seeds' is permitted.

If you have another kind of straw in your dog trailers, please remove it before your travel to the event site. Please be mindful of this and bring appropriate dog bedding, as well as scooters, tents and vehicles that are free from soil. We want to ensure continued, future access to this new race site.

Vaccination Checks

There will be animal vaccination checks at this race. An online generator will be used to randomly select 10% of entrants by bib number. Please ensure you have all the relevant up-to-date vaccination/Titre Testing information and microchip numbers for every dog you bring to the event.

Race Entries

After the event closing date, late entries will not be accepted, changing of classes will not be permitted and refunds will not be given.

Race Etiquette

All competitors and spectators are asked to please remember the following to ensure safety of both humans and dogs on Race Days:

- Dogs of all breeds are to remain on leads, stake out lines or stakes at all times, if not secured in a cool car or trailer.
- All people and dogs are to remain clear of the race tracks when classes are running.
- You are not permitted to stand in front of the start/finish line, please stay well behind the barriers.
- Please ensure you speak to owners of dogs before approaching their dogs.
- Please keep a distance of at least 2 meters from staked out dogs, when walking/etc. your dogs.
- Please clean up after yourselves and your dogs to ensure future use of race locations.
- Helmets **MUST** be worn in ALL Classes (except Canicross) and Scooters, Rigs and Bikes must be equipped with cable cutters approved by ASSA standards.
- Bike or headlights are required for races run in the dark.
- The issued bib must be worn at all times during the race
- For any enquiries or questions regarding the races please speak to a Committee member.

Race Etiquette and rules can be found online at www.wassa.com.au, under the documents tab.

Race Schedule

Driver's meetings will be held at the Event HQ Marquee. Please remember that if you are a driver and do not attend that day's drivers meeting, you do not race that day.

Heat 1

Driver's meeting at 3 pm Saturday Afternoon 10 August

Racing starts at 4 pm (depending on temperatures)

Classes will be run as follows:

1. Pee Wee
2. Canicross
3. 1 dog Touring, 2 dog Touring and Junior
4. 1 dog Veteran, 2 dog Veteran and Novice
5. 1 dog
6. Bikejoring
7. 3 dog and 2 dog
8. 6 dog, 4 dog

Heat 2

Driver's meeting at 5:30 am (depending on temperatures) Sunday morning 11 August

Racing starts at 6 am (depending on temperatures)

Classes will be run as follows:

1. 6 dog, 4 dog
2. 3 dog and 2 dog
3. Bikejoring
4. 1 dog
5. 1 dog Veteran, 2 dog Veteran and Novice
6. 1 dog Touring, 2 dog Touring and Junior
7. Canicross
8. Pee Wee

You will be advised of the race order, and which classes are running together at the driver's meeting. Please arrive at the start chute promptly when called. Races will normally start no more than 10 minutes after the last dog from the previous heat has crossed the finish line.

Start times are approximate. Temperatures on the day will dictate actual start times. Heat 2 will be run in reverse order. If safe temperatures are not reached to allow the full race schedule to run as stated, time saving measures will be brought into play being shortening of distances in either or both heats, cancelling of heats.

Please ensure that all dogs not actively competing (or preparing to compete) in the current class are kept either in a cool car or trailer or secured well away from the track. Please do NOT walk your dog anywhere near the tracks while people are racing.

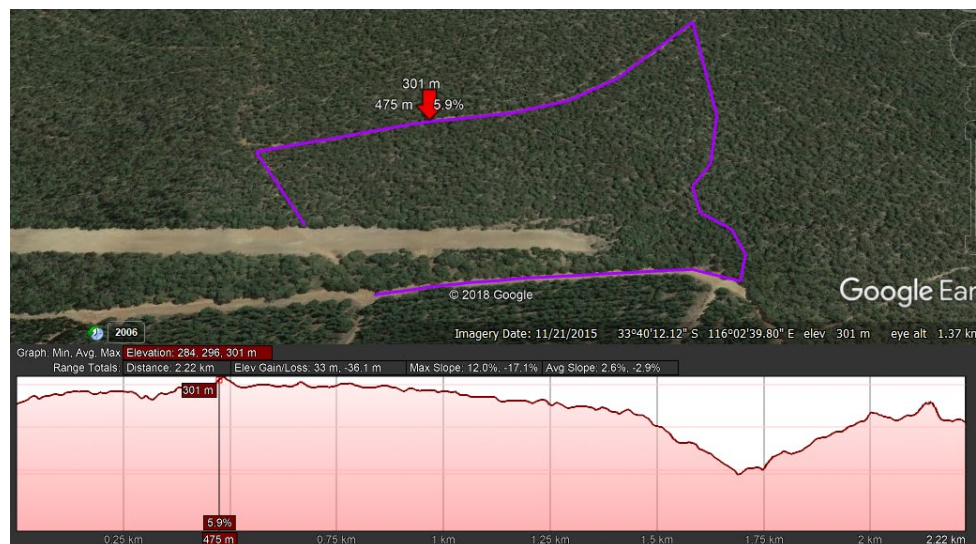
ASSA Race Rules and WASSA Bylaws must be STRICTLY adhered to. The official rules of WASSA are available at wass.com.au, *Documents*.

Race Tracks

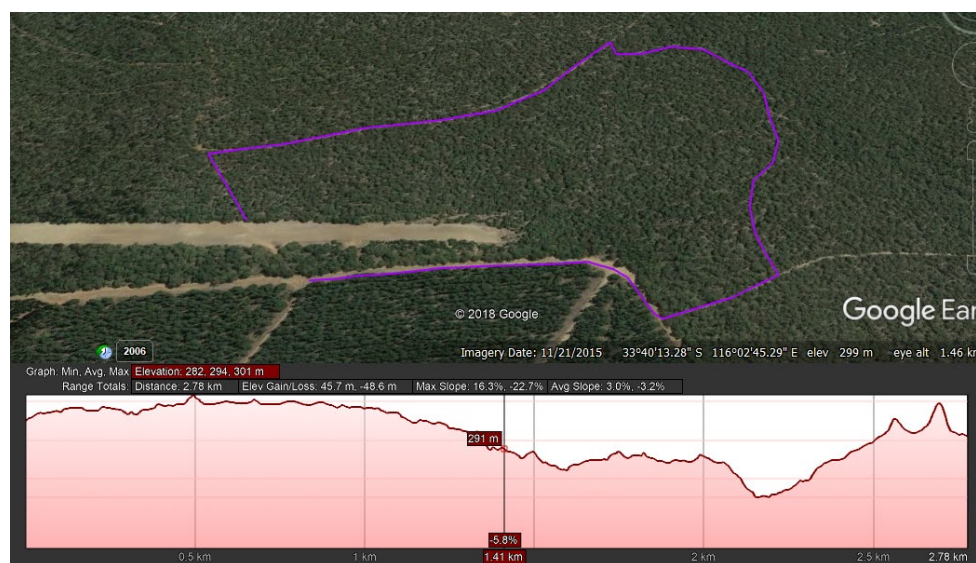
Races will be run on the tracks located around the campsite.

Race distances will be approximately as follows **and subject to change** depending on weather and track conditions.

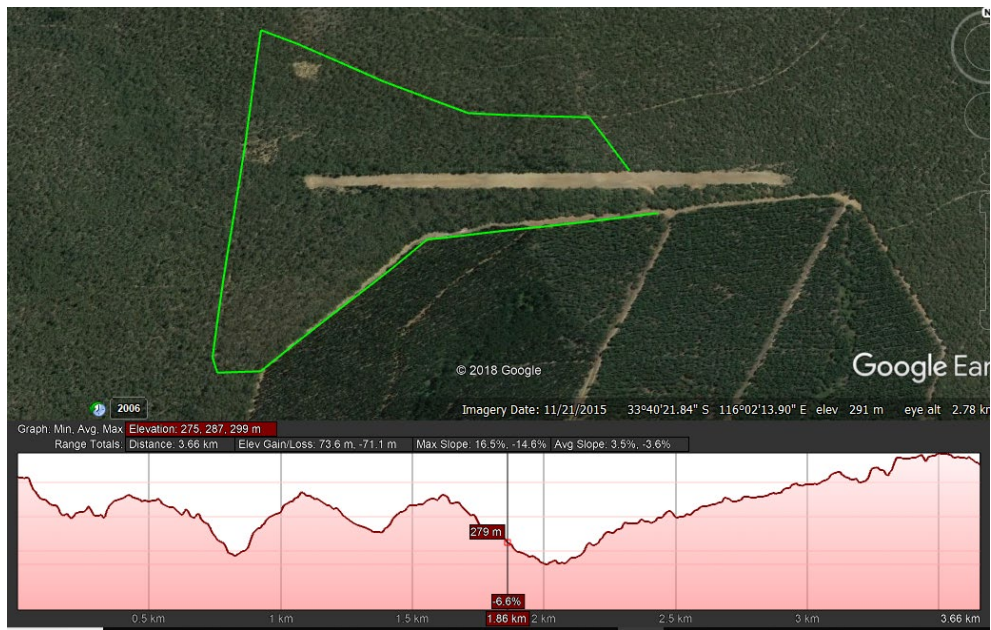
Novice, Veteran (1 & 2 Dog), Junior, Touring (1 & 2 Dog), & Canicross = 2.2 kms



1 Dog = 2.7 kms



Bikejoring, 2 Dog, 3 Dog = 3.6km



4 Dog & 6 Dog = 6.1 kms

