

WASSA Race 1, 2020

JARRAHWOOD JAUNT



July 25-26, 2020

Jarraewood Pine Plantation, Jarraewood
Evening/morning race

The event will be held at the Jarraewood Pine Plantation and is being run on 25 and 26 July 2020 as an evening/morning race. The first driver's meeting is at 3 pm on Saturday 25 July 2020. The tracks here are wide, twisty and flat, and should make for some great racing. Start/Finish lines will be close to the campsite with no requirement to drive to them. We always suggest bring your wet weather gear and changes of clothes and shoes.

Food / Drink

BYO or bring cash to purchase from the food van:

Le Chariot de Café is onsite for Saturday – Lunch and Dinner; Sunday – Breakfast

Medical issues

If your dog needs urgent medical attention, the nearest veterinary clinics are located at

Busselton Vet Clinic

60 Bussell Hwy
Busselton WA 6280
(08) 9752 1433

GEOvet Veterinary

Hospital 89 Bussell Hwy
West Busselton WA 6280
(08) 9754 4422

The nearest Human medical facilities are located at:

Busselton Health Campus

203 Mill Road
West Busselton, WA 6280
(08) 9753 6000



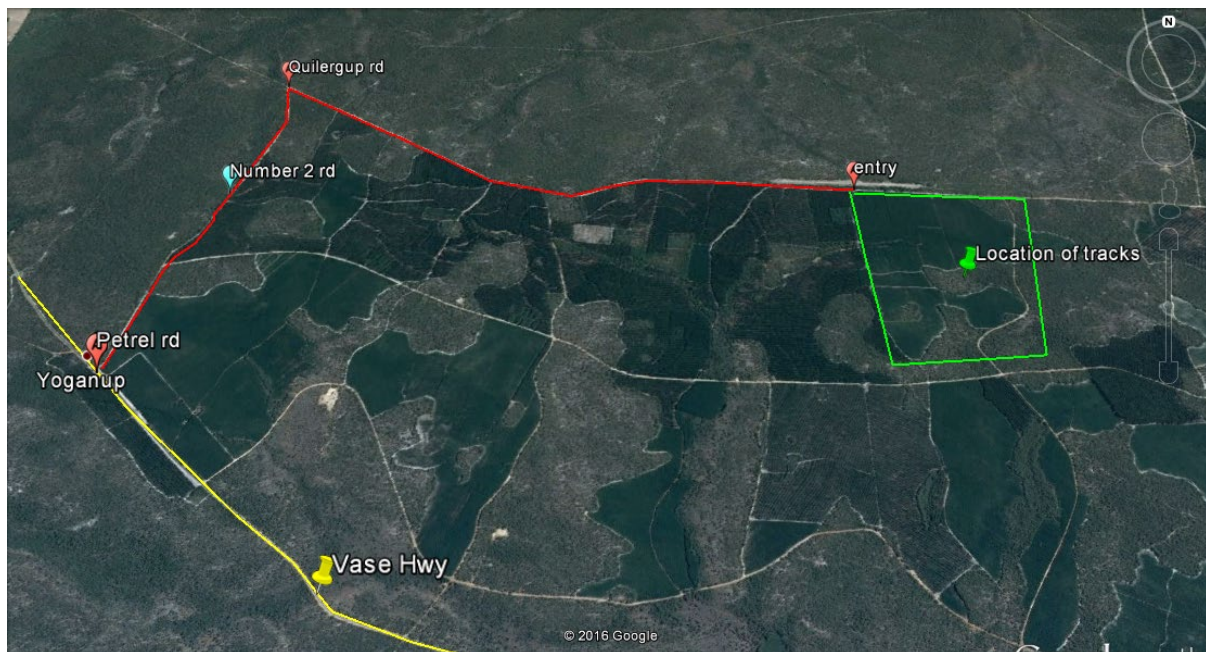
Venue

Jarrahowood Pine Plantation, Jarrahowood WA. Approximately 200km south of Perth, 25 kms South East of Busselton, accessed from the Vasse Highway.

The entry to the plantation is off the Vase Hwy in Yoganup on “Number Two Road” (The street sign says “**Petrel Rd**”).

The easiest way into the event HQ is to follow Number Two road approximately 2.8 km to a “T” junction, Turn Right onto Quilergup road and follow it for approximately 4.3 km to the airstrip. The airstrip will be on the left.

We will have a WASSA signpost/s on the road. Event HQ will be located at that entrance and people can park to the left or right on the Airstrip.



Event is a bush campsite with no powered sites, but plenty of room for tents, campers, RV's and caravans. We will have a small number of porta-loos on site, but if you can bring your own, please do. WASSA has use of the site from lunchtime Friday July 24 to mid afternoon Sunday July 26, 2020.

There will be no rubbish disposal facilities on site, so all trash must be taken out with you. Campfires are permitted only if contained within a portable campfire pit/ring. No ground fires are allowed.

Dogs are not permitted to be free running or unrestrained **at any time**. Please ensure your dog(s) are on lead, tie-out line, crated or in the car/trailer when not racing. The area surrounding the plantation is subject to regular **1080 baiting** which unrestrained dogs are at risk from.



When staking out your dogs around the campsite please take into consideration the proximity of any other dogs & campers, clean up after your dog, and fill in any holes if your dog digs. Please also remove any straw and dog fur from around your campsite before you leave.

*****PLEASE NOTE*****

It is a condition of our site permit from DPaW that we do not bring soil or plant material onto site, to prevent dieback issues. 'Bleached, clean straw with no seeds' is permitted.

If you have another kind of straw in your dog trailers, please remove it before your travel to the event site. Please be mindful of this and bring appropriate dog bedding, as well as scooters, tents and vehicles that are free from soil. These are superb, flat tracks and we want to ensure continued, future access to this new race site.

Race Etiquette

All competitors and spectators are asked to please remember the following to ensure safety of both humans and dogs on Race Days:

- Dogs of all breeds are to remain on leads, stake out lines or stakes at all times, if not secured in a cool car or trailer.
- All people and dogs are to remain clear of the race tracks when classes are running.
- You are not permitted to stand in front of the start/finish line, please stay well behind the barriers.
- Please ensure you speak to owners of dogs before approaching their dogs.
- Please keep a distance of at least 2 meters from staked out dogs, when walking/etc. your dogs.
- Please clean up after yourselves and your dogs to ensure future use of race locations.
- Helmets **MUST** be worn in ALL Classes (except Canicross) and Scooters, Rigs and Bikes must be equipped with cable cutters approved by ASSA standards.
- Bike or headlights are required for races run in the dark.
- The issued bib must be worn at all times during the race
- For any enquiries or questions regarding the races please speak to a Committee member.

Race Etiquette and rules can be found online at www.wassa.com.au, under the documents tab.



Race Schedule

Driver's meetings will be held at the Event HQ Marquee. Please remember that if you are a driver and do not attend that day's drivers meeting, you do not race that day.

Heat 1

Driver's meeting at 3 pm Saturday Afternoon 25 July

Racing starts at 4 pm (depending on temperatures).

Novice mushers must have participated without incident in at least three single dog touring/ novice class races in separate events before they can move into multi-dog classes.

Classes will be run as follows:

- 1. Canicross
- 2. Pee Wee
- 3. 1 dog Touring, 2 dog Touring and Junior
- 4. 1 dog Veteran, 2 dog Veteran and Novice
- 5. 1 dog and Bikejoring
- 6. 2 dog
- 7. 3 dog

Heat 2

Driver's meeting at 5:30 am (depending on temperatures) Sunday morning 26 July

Racing starts at 6 am (depending on temperatures)

Classes will be run as follows:

- 1. 3 dog
- 2. 2 dog
- 3. 1 dog and Bikejoring
- 4. 1 dog Veteran, 2 dog Veteran and Novice
- 5. 1 dog Touring, 2 dog Touring and Junior
- 6. Pee Wee
- 7. Canicross

You will be advised of the race order, and which classes are running together at the driver's meeting. Please arrive at the start chute promptly when called. Races will normally start no more than 10 minutes after the last dog from the previous heat has crossed the finish line. Heat 2 at this event will be run in reverse order.

If deemed necessary time saving strategies to avoid high temperatures will be brought into effect. Strategy 1 will be shortening time between competitors in the start chute. If Strategy 1 is not proving efficient enough Strategy 2 will come into play being teams will be directed onto shorter tracks.

Please ensure that all dogs not actively competing (or preparing to compete) in the current class are kept either in a cool car or trailer or secured well away from the track. Please do NOT walk your dog anywhere near the tracks while people are racing.

ASSA Race Rules and WASSA Bylaws must be STRICTLY adhered to. The official rules of WASSA are available at wassa.com.au, *Documents*.



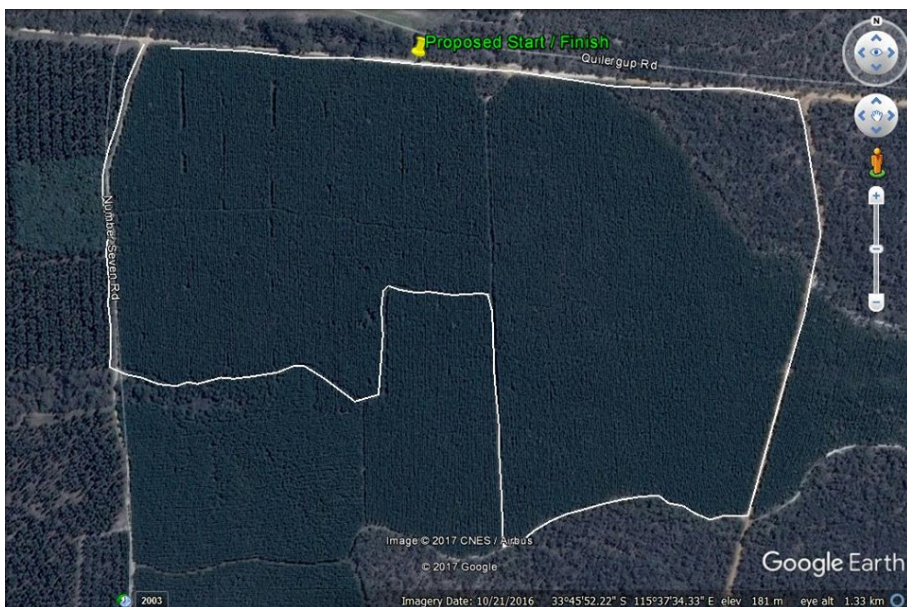
Race Tracks

Races will be run on the tracks immediately south of the campsite. Race distances will be approximately as follows and subject to change depending on weather and track conditions.

Novice, Veteran 1 & 2 Dog, Junior, Touring 1 & 2 Dog & Canicross = 2.04 km



1 Dog, Bikejoring (Open class bikejoring only) = 3.2 km





2 Dog, 3 Dog = 5.2 km

